

# Wind. It means the world to us.

## Powering WA's future

Wind energy projects harness an abundant natural resource to generate clean energy whilst at the same time supporting local businesses through local jobs and investment.


The Bowelling Wind Farm (BWF) will include more than 30 turbines which will generate over 130 megawatts (MW) and could power over 100,000 WA homes.

Bowelling Wind Farm will generate an investment of around \$1 billion, create around 400 construction jobs and around 10 local long term operational roles as well as opportunities for local businesses.

Engagement, transparency and benefit-sharing with the local community will be critical to a successful project.




More than **30** turbines




More than **130** MW renewable energy capacity

**>13%**  
of Australia's electricity supply



**189,000<sub>MW</sub>**  
Vestas installed wind capacity across 88 countries



Learn more about Vestas at [vestas.com](https://vestas.com)



## Wind energy in Australia

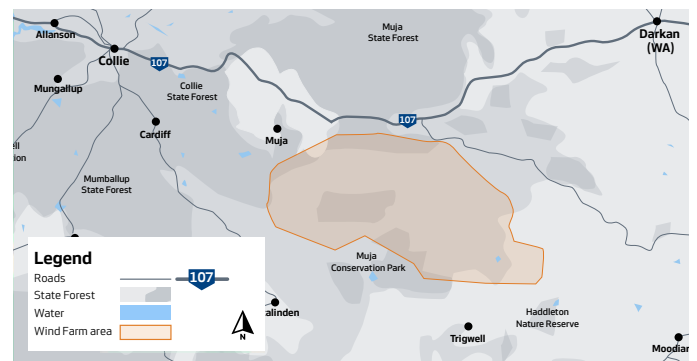
Did you know that wind energy currently supplies over 13% of Australia's total electricity? Wind farms can now generate energy more cheaply than conventional fossil fuel plants, and with none of the associated pollution.

Vestas, a world leader in wind energy, is funding development of the Bowelling Wind Farm project. Vestas has supplied more than 189,000 MW of wind turbines in 88 countries which accounts for almost 20% of the total worldwide installed capacity. Vestas has been in the top 3 of most sustainable companies in the world since 2022.\* In Australia, Vestas has installed more than 2,200 wind turbines across 60 wind farms, and is operating more than 6GW which represents over 49% of Australia's installed wind energy capacity.

## Where is Bowelling Wind Farm located?

Bowelling Wind Farm is a proposed renewable energy project in Western Australia, approximately 170 km South of Perth, in an area classified as the Central region of Western Australia. The project sits within the Shire of West Arthur and is in close vicinity to existing high voltage transmission infrastructure.

The existing access roads to the area allows for transport of turbine blades, towers, electrical equipment and movement of construction vehicles and deep-water sea port access.

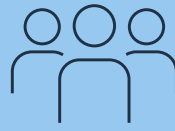


Project location map

## Community benefits

The Bowelling Wind Farm project will provide the Central region of Western Australia with a range of social and economic benefits:

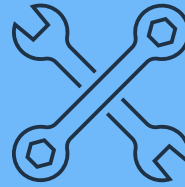
- Approximately \$1 billion investment in the local region
- Opportunities for local contractors and businesses
- Up to 400 new jobs expected to be created during construction
- Up to 10 local long-term service and maintenance jobs created during project operation
- Development of new skilled labour within the growing renewable energy industry



Up to  
**400**  
jobs during  
construction

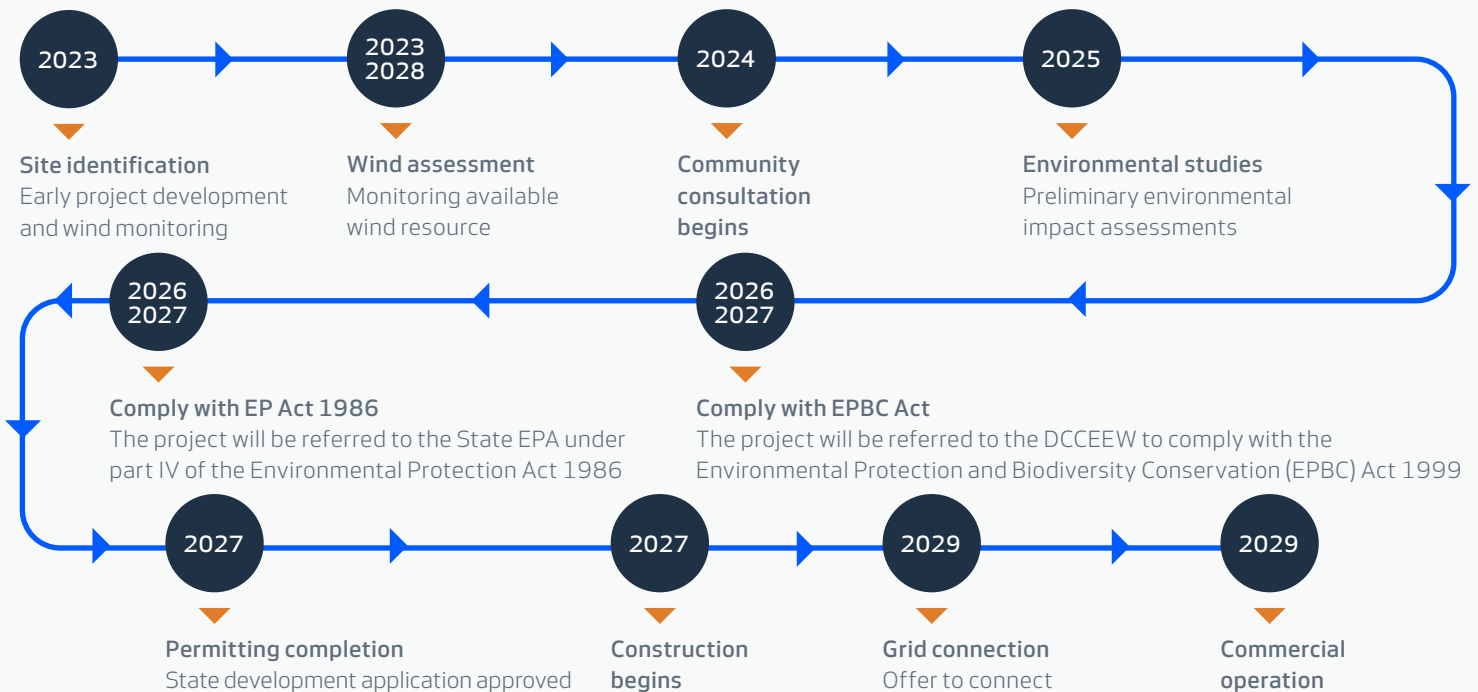


Approx.  
**\$1B**  
investment



Up to **10** local  
long-term service and  
maintenance jobs

## Project timeline



## Hearing from the local community

Vestas and the Bowelling Wind Farm project team are fully committed to adhering to the Clean Energy Council's Community Engagement Best Practice Charter for Renewable Energy Projects and the requirements as detailed under the Environmental Protection Act 1986 (EP Act), which underscores our goal of fostering meaningful dialogue with all local stakeholders.

We value your input and welcome your participation in our upcoming community events. We also encourage you to share your feedback with us through our project website, email, or phone.

To register for project updates, please email us at [info@bowellingwindfarm.com.au](mailto:info@bowellingwindfarm.com.au) to receive updates direct to your inbox.

